



Indoor Playgrounds





Ready. Set. Play!

Explore playgrounds that provide hours of entertainment for children ages 2-12 years of age. Our playgrounds are designed with a priority on safety while challenging and exploring their own capabilities.

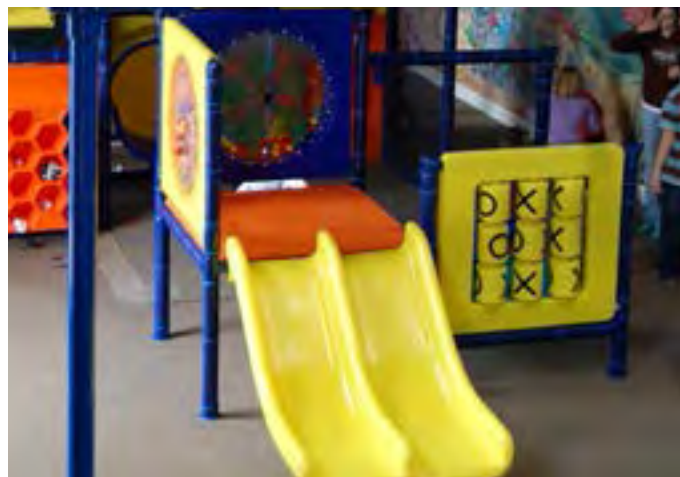
Designed with imagination, technology, and safety in mind, we pride ourselves with meeting the industry's strictest safety standards. Parents can rest easy knowing children's safety take precedence in a Superior indoor playgrounds structure.

Easy to maintain indoor playgrounds help you and your business stay competitive to keep customers coming again and again.



Day-in and day-out you can catch little ones climbing the Octalink Tower, crawling through the many tubes and tunnels to get to the Turbo Copter, Race Car and Tri-plane vehicles. Inside, children also find multiple car-themed accessories including a steering wheel! Don't forget about the four slides and many lookout spheres.



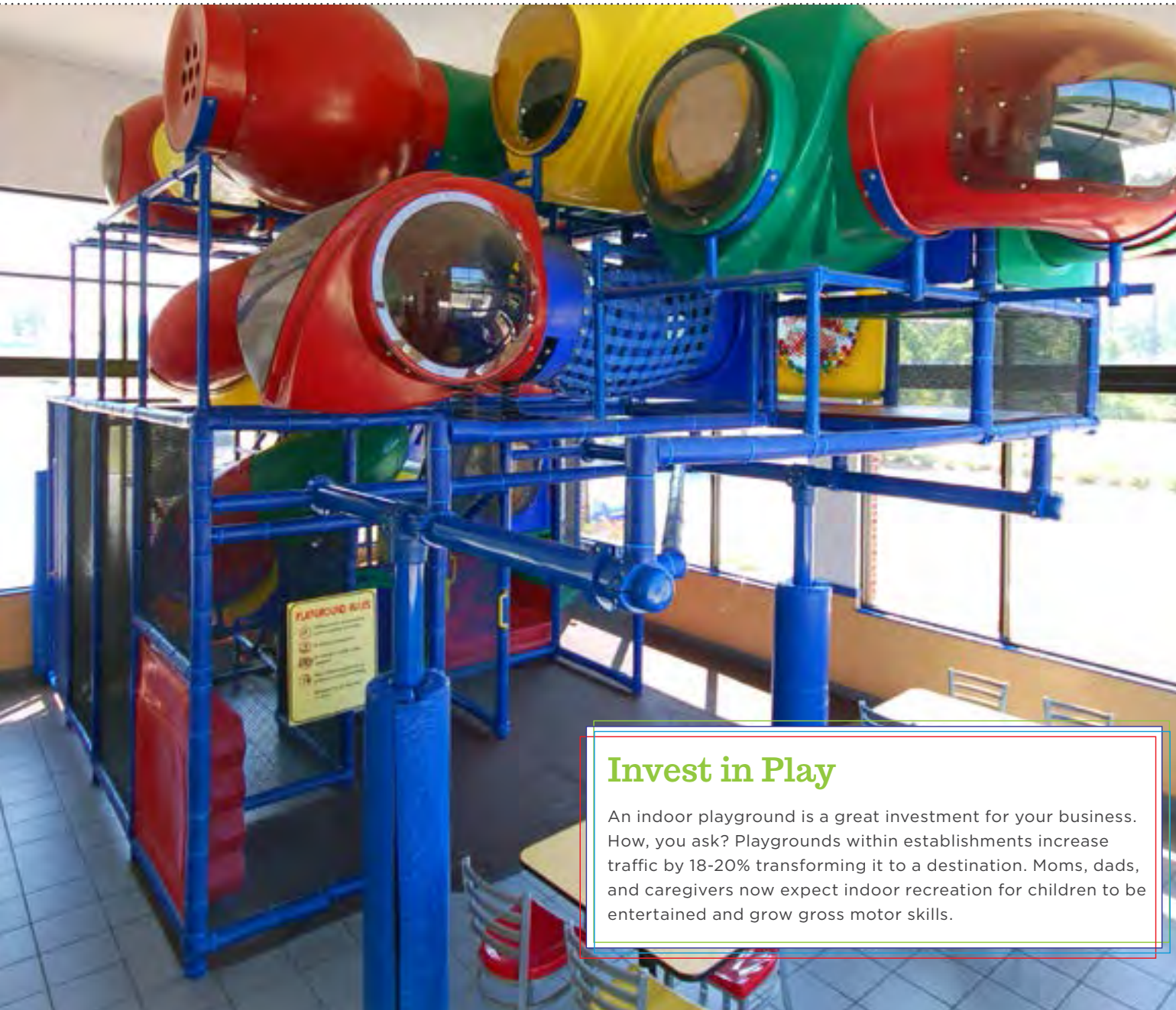


Of the many features this structure has to offer, a Hammerhead Shark, Octalink Tower, and many lookout spheres, numerous play panels, and much more! After the children tire themselves out from all the fun, they slide down a 3-level spiral slide then grab their shoes out of the Shoe Saver.



Dallas, TX

This featured structure was installed as part of a window display during the holidays at a luxury department store. The theme for the window display was outer space. Custom designed for the department store, you can see the long tunnel, with many lookout spheres, a 2-way cube, web crawl and several 90° elbow components.



FEATURED Structures

Model 8432-0



Model 6198-0



Model 8334-0

Invest in Play

An indoor playground is a great investment for your business. How, you ask? Playgrounds within establishments increase traffic by 18-20% transforming it to a destination. Moms, dads, and caregivers now expect indoor recreation for children to be entertained and grow gross motor skills.



Call - 1.888.608.6116



Visit - www.play-apps.net



Email - hello@play-apps.net



MODEL 7713-0

Size: 18' x 16' x 8'4"

Capacity: 22

Features:

- | | | | | |
|------------------|-------------------|------------------------|--------------------|---------------|
| 1. Turbo Tube | 3. Lookout Sphere | 5. Concentration Panel | 7. Ball Turn Panel | 9. Shoe Saver |
| 2. Driving Panel | 4. Hook Slide | 6. Tic-Tac-Toe Panel | 8. Crawl Tubes | |

ADDITIONAL VIEWS





MODEL 8314-1

Size: 26'3" x 20'3" x 8'4"

Capacity: 42

Features:

- | | | | |
|-----------------|---------------|-------------------|----------------------|
| 1. Turbo Copter | 3. Turbo Tube | 5. Straight Slide | 7. Tic-Tac-Toe Panel |
| 2. Crawl Tubes | 4. 2-Way Cube | 6. Driving Panel | 8. Lookout Sphere |

ADDITIONAL VIEWS





MODEL 8432-0

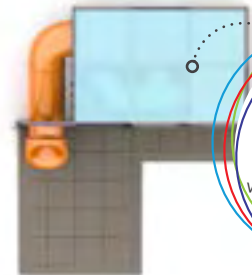
Size: 12' x 10' x 8'4"

Capacity: 20

Features:

- 1. Gear Panel
- 2. Driving Panel
- 3. Deck Climb
- 4. Mirror Panel
- 5. Shoe Saver
- 6. Tic-Tac-Toe Panel
- 7. Ball Turn Panel
- 8. Hook Slide

ADDITIONAL VIEWS





MODEL 6198-0

Size: 18'2" x 18'4" x 16'10" **Features:**

Capacity: 40

- 1. Rocket Climb
- 2. Half Dome Sphere

- 3. Jet Fighter
- 4. 3-Level Spiral Slide

- 5. Shoe Saver
- 6. Race Car

- 7. Interactive Turbo Copter

ADDITIONAL VIEWS





14'3"

MODEL 7716-O

Size: 24' x 16' x 14'3"

Capacity: 68

Features:

- | | | | |
|-----------------|----------------------|--------------------------|------------------|
| 1. Spiral Slide | 4. Ball Turn Panel | 7. Tri-Plane | 10. Shoe Saver |
| 2. Safari Jeep | 5. Tic-Tac-Toe Panel | 8. Horiz./Vert. Squeezes | <i>and more!</i> |
| 3. Turbo Tube | 6. Dinosaur Panel | 9. Two Hook Slides | |

ADDITIONAL VIEWS





MODEL 6177-0

Size: 18'6" x 32'3" x 18'6 1/4"

Capacity: 52

Features:

- 1. 4-Level Spiral Slide
- 2. Tri-Plane

- 3. Turbo Copter
- 4. Snake Crawl

- 5. Triple Race Slide
- 6. Vertical Squeeze

- 7. Punching Bags
- 8. Web Crawl

and more!

ADDITIONAL VIEWS



Call - 1.888.608.6116



Visit - www.play-apps.net



Email - hello@play-apps.net



MODEL 8043-3

Size: 16' x 12' x 14'4"

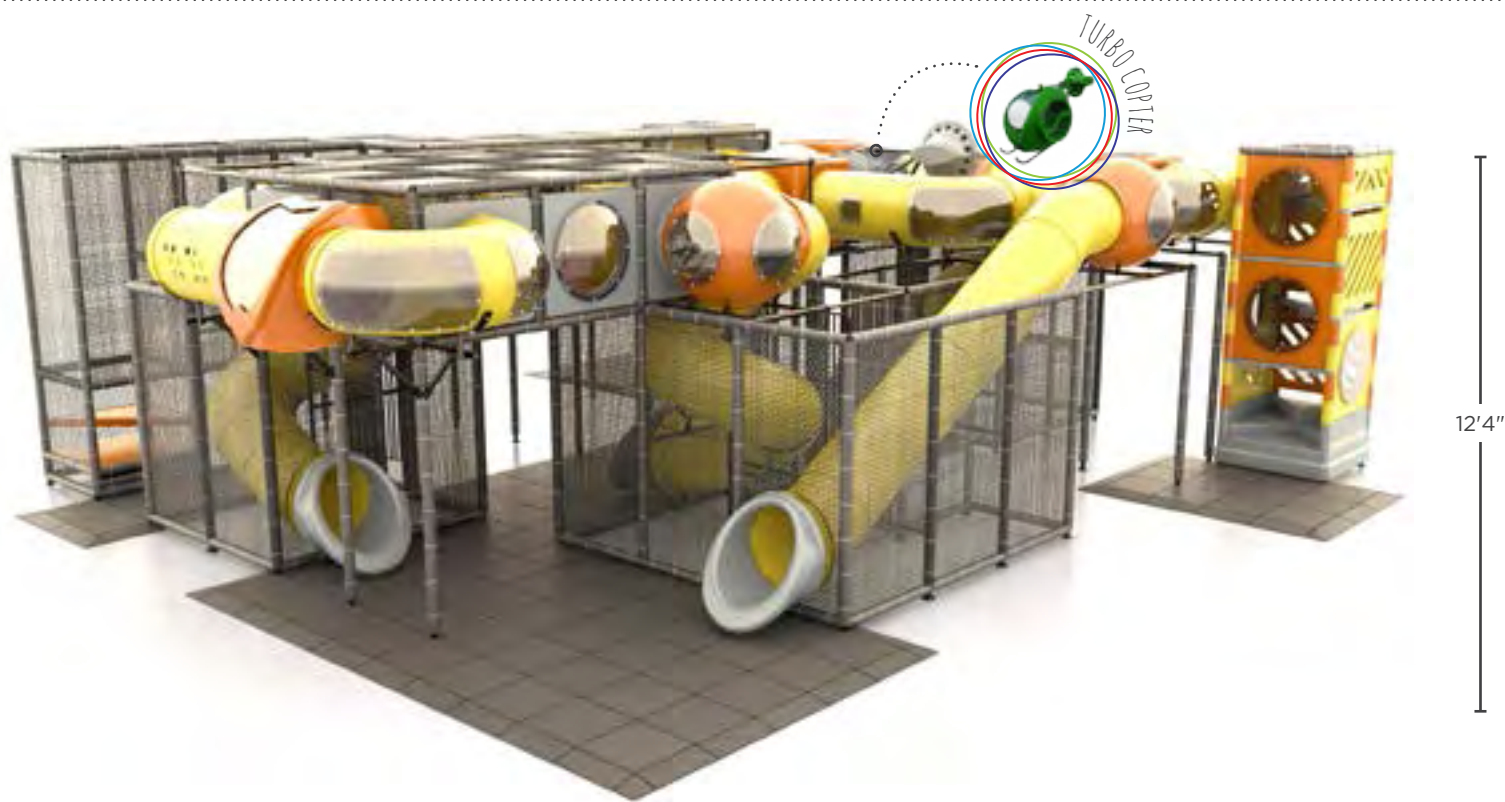
Capacity: 36

Features:

- | | | | | |
|---------------------|----------------------|--------------------|-------------------|------------------|
| 1. Shoe Saver | 3. Tic-Tac-Toe Panel | 5. Ball Turn Panel | 7. Lookout Sphere | 9. Punching Bags |
| 2. Vertical Squeeze | 4. C-Force Panel | 6. Turbo Copter | 8. Spiral Slide | |

ADDITIONAL VIEWS





MODEL 8243-0

Size: 40'4" x 37' 11¼x 12'4" **Features:**

Capacity: 110

- | | | | |
|----------------------|------------------|-------------------|-----------------------------|
| 1. Turbo Tube | 3. Maze Pads | 5. Turbo Copter | 7. Lookout Spheres |
| 2. Tic-Tac-Toe Panel | 4. Punching Bags | 6. Octalink Tower | 8. Spiral & Straight Slides |

ADDITIONAL VIEWS





MODEL 8334-0

Size: 24' x 20' x 12'4"

Capacity: 46

Features:

- 1. Punching Bags
- 2. Log Jam

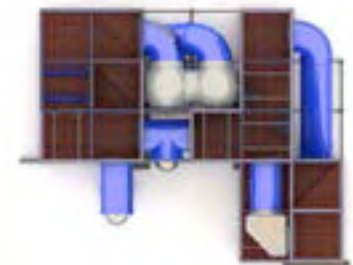
- 3. Lookout Spheres
- 4. Maze Pads

- 5. Hook Slide
- 6. Tic-Tac-Toe Panel

- 7. Ball Turn Panel
- 8. T-Climb

and more!

ADDITIONAL VIEWS





MODEL 8460-0

Size: 24' x 16' x 18'4"

Capacity: 60

Features:

- | | | | | |
|----------------|------------------|-------------------|------------------------|------------------|
| 1. Shoe Saver | 3. Punching Bags | 5. Maze Pads | 7. Snake Crawl | <i>and more!</i> |
| 2. Hook Slides | 4. Web Crawl | 6. Sphere Squeeze | 8. 3-Level Dbl. Spiral | |

ADDITIONAL VIEWS



Call - 1.888.608.6116



Visit - www.play-apps.net



Email - hello@play-apps.net



Building Fun!

Want to see some of the parts that build fun? Well, you are in luck! The components featured on the following pages can be used to create your own playground or add components to a playground featured in this brochure.

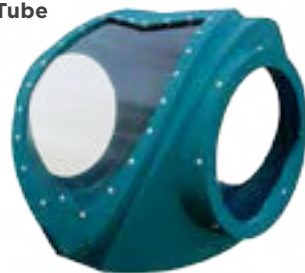
T-Tube I
p. 18

FEATURED Components

Great White Shark
p. 19



Turbo Tube
p. 18



Jet Fighter
p. 17





VEHICLES

Most of our “vehicles” offer interactive components such as steering wheels and the ability to spin the component's propellers from within the vehicle.



Rocket Climb



Turbo Copter



Sub Tunnel



Jet Fighter
(T-Tube Climb)



Drag Car



Helicopter



Race Car



Submarine



Train



Tri-Plane



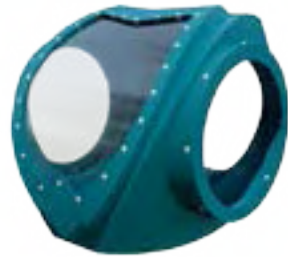


CRAWL THROUGH EXPERIENCE

These components contribute to children's crawl through experience and add flair to the structure's design. Add a T-Tube I for a great half-dome lookout or add a 90° Elbow for a rounded path. Which one is our favorite? The Octalink Tower below!



Octalink Tower



Turbo Tube



Regular Turbo Tube



Turbo Tube with Dead End



2-Way Cube



90° Elbow



Corner Wedge



T-Tube I



T-Tube II

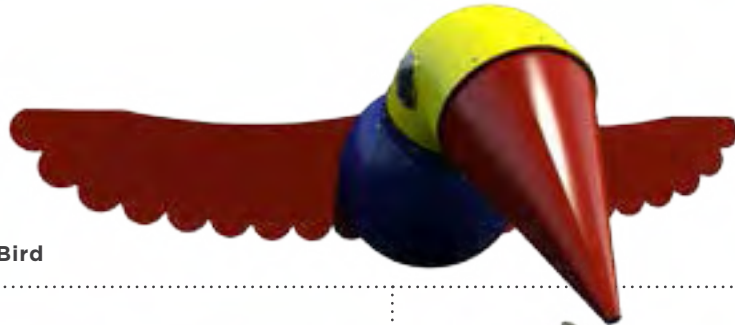


Turbo Climb

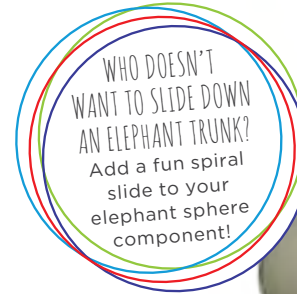


ANIMALS AND SPORTS

Numerous animal and sport themed components that help to build a great structure are offered. Let your imagination run wild and build a safari, underwater, or sports theme playground!



Tucan Bird



Elephant Sphere



Crab



Great White Shark



Hammerhead Shark



Baseball with Dead End



Soccer Ball with Dead End



Sea Horse



Zebra





Colors

PLASTIC COLORS



Light Yellow Yellow Orange Red



Pink Wine Purple Royal Blue



Sky Blue Cobalt Teal Blue Teal Green



Light Green Spring Green Dark Green Brown



Tan Gray Black White

FOAM PADDING COLORS



Yellow Red Purple Royal Blue



Light Blue Green Tan Gray



Charcoal Black

General Information

Information Needed for the Proposal

In order to create a detailed playground proposal, the following information is needed to start the proposal process.

- Floor plan showing location and dimensions of doors, windows, walls, columns, fences, ceiling height, etc.
- Play unit height along with impediments such as signs, ceilings, light fixtures, HVAC structures, etc.
- Existing or proposed structures such as tables, other play elements, benches, booths, etc.
- Elevation changes such as steps or ramps
- Proposed surface finishing of playground area

Ordering Process

The below points provide a general outline of the ordering process:

- Review, approve and sign indoor playground plans and proposal
- Sign purchase agreement
- Product is manufactured
- Ship and install indoor playground

Financing

- We have partnered with several companies to assist with financing your recreational equipment, and sometimes saves you money.
- Contact your Sales Representative for more information.

Site Preparation

- Site preparation, including any necessary permits or licenses, is the responsibility of the purchaser.
- Your site must accommodate the unit and all necessary clearances.
- Clear access path to the finished area
- Carpeting should be installed prior to unit installation.

Shipping

- All freight charges are FOB Carrollton, Georgia, U.S.A.
- Freight charges are additional and are not included in the selling price of the equipment.
- Freight charges will be a separate line item on the proposal.
- Transit time is dependent upon your location.

Installation

- SRP provides professional installation of your indoor playground equipment by an experienced, qualified installer for an additional cost.
- This cost will vary based on the amount of equipment, site accessibility, site conditions and travel expenses etc.
- Installation charges will be a separate line item on the proposal.
- Unless specifically noted installation charges do NOT include site preparation, permitting or removal of existing equipment.
- If the as-built conditions are different than original plans SRP must be notified to make necessary changes to the design.
- If actual site conditions vary from the original plans additional charges may incurred due to additional parts, shipping, additional installation time or return trips.

Warranty

- SRP warrants that their playgrounds will be free from defects in materials and workmanship for a period of one year from the date of installation.
- This warranty does not cover damage caused by vandalism, misuse or abuse, altered or modified parts, or cosmetic damage such as scratches, dents, fading or weathering and normal wear and tear.
- This warranty is valid only if the structures are installed in conformity with instructions provided by SRP using approved SRP parts.
- Warranty claims must be filed within the applicable warranty period and accompanied by a sales order or invoice number.





General Information (cont.)

QUALITY, STANDARDS, AND GUIDELINES



American Society for Testing and Materials

- The American Society for Testing and Materials is an independent and world renowned developer of technical standards utilized in testing a multitude of products.
- ASTM's F15.29 committees, met consistently for over a decade in the continual development of the F1487 Standard Consumer Safety Performance Specifications for Playground Equipment for Public Use.
- The current version is F1487-11, published in 2011.



Access Board (ADAAG)

- Guidance Available on Play Area Guidelines:
<http://www.access-board.gov/news/playguide.htm>
- Access Board (The United States Architectural and Transportation Barriers Compliance Board) has completed Accessibility Guidelines for Play Facilities as set forth in the Americans with Disabilities Act of 1990. The Final Report of the Regulatory Negotiation Committee is available via the Internet.



IPEMA™

- In the interest of playground safety, the International Play Equipment Manufacturers Association (IPEMA) provides a Third Party Certification Service whereby a designated independent laboratory, TÜV SÜD America Inc., (TÜV), validates an equipment manufacturer's certification of conformance to the ASTM F1487 Standard
- Consumer Safety Performance Specification for Playground Equipment for Public Use, except sections 7.1.1, 10 & 12.6.1; to CAN/CSA Z614 Children's Playspaces and Equipment, except clauses 9.8, 10 and 11; or both. A list of current validated products may be viewed at www.ipema.org.



U.S. Consumer Safety Product Commission

- Handbook for Public Playground Safety:
<http://www.cpsc.gov/cpsc/pub/pubs/325.pdf>



Indoor Playgrounds



| Call - 1.888.608.6116



| Visit - www.play-apps.net



| Email - hello@play-apps.net